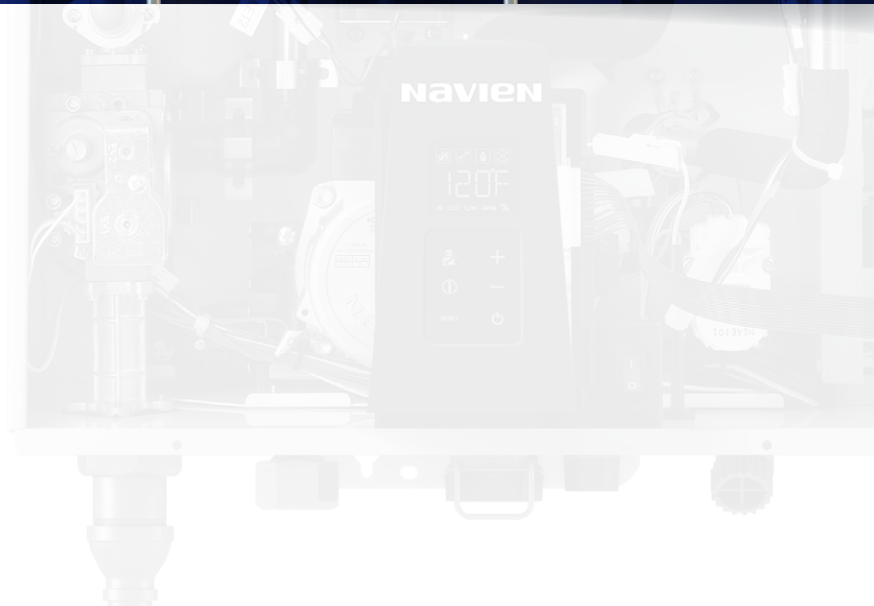


NPE-A and NPE-S Condensing Tankless Water Heaters

Navien makes
it easy to
go tankless in
residential and
commercial
applications.



NPE-Advanced

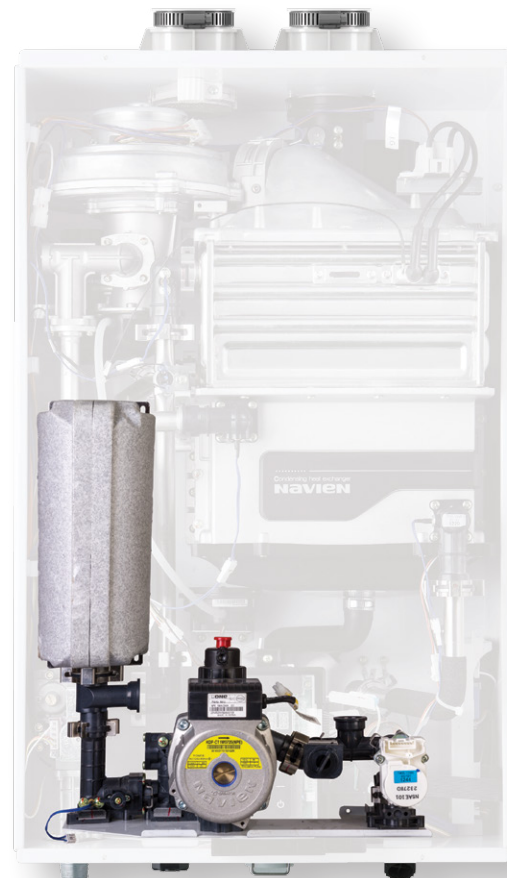


0.96 UEF/0.97 EF advanced high-efficiency tankless water heater technology for residential and commercial applications with exclusive ComfortFlow® recirculation

Included on all NPE-A models

ComfortFlow® Recirculation system

Navien ComfortFlow® is the first and only system that incorporates a buffer tank and recirculation pump. The buffer tank eliminates the "cold water sandwich" effect commonly found in other tankless water heaters. The recirculation pump saves water and money with the reduced time to get hot water.

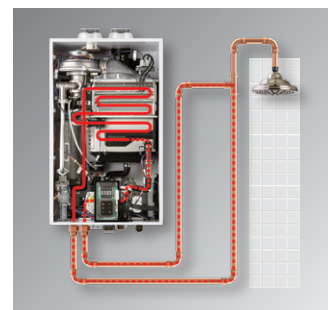


Optional add-ons for NPE-A models

On Demand Hot water activation system



At the push of a button, the Navien On Demand hot water system activates the internal recirculation pump and gas fired burner to heat up the water in the supply lines. This gives your customers hot water when they need it, saving water and money. California Title 24 compliant.



ComfortAir+™ Combination space heating and DHW

Designed for both retrofit and new construction residential applications, Navien's ComfortAir+ Kit* consists of an add-on controller that allows for space heating and DHW system integration between NPE-A Series tankless water heater models and a hydronic air handler.

ComfortAir+ is compatible with hydronic air handler models that require W1/W2/R terminals along with single or dual-stage thermostats.** The included Outdoor Reset Sensor provides optimum performance and efficiency for space heating.

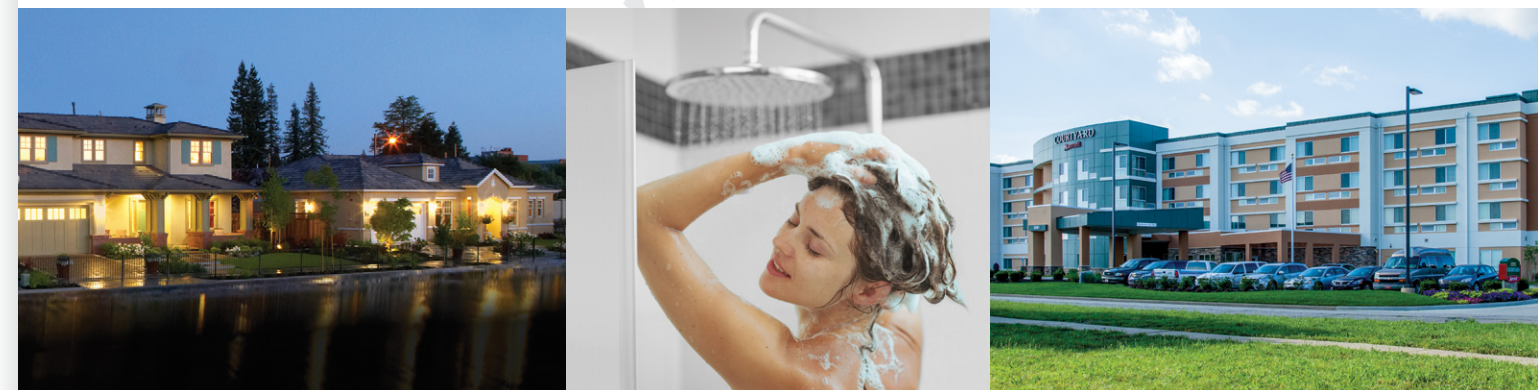
*Compatible with NPE-A series units produced on or after May 31, 2014.
**Self-powered thermostats only.



Navien World-class quality

The global leader in energy efficient technology

KD Navien was an early leader in developing condensing technology for boilers and water heaters. Condensing technology maximizes energy by using unused heat emitted from flue gases. As a result, energy consumption and greenhouse gases are significantly reduced. Emission temperatures are much lower too.



NPE series are easy to sell, easy to install for residential and commercial applications

Cuts installation time in half

Thanks to using 1/2" gas pipe and 2" PVC venting, you can install a Navien tankless water heater in about half the time as competitive tankless heaters — about the same time as a traditional tank heater.

Fewer callbacks, longer life, faster heating

Navien was first to offer dual stainless steel heat exchangers, rather than copper, which extends the life of the unit by resisting corrosion.

Energy Star highest rated gas water heater

The NPE is the most energy efficient* tankless water heater series in the industry. Our ultra condensing technology delivers cooled exhaust gas and high performance up to 0.97 UEF/0.99 EF.

*DOE Energy Star Directory.



THE LEADER IN CONDENSING TECHNOLOGY

NPE-Advanced

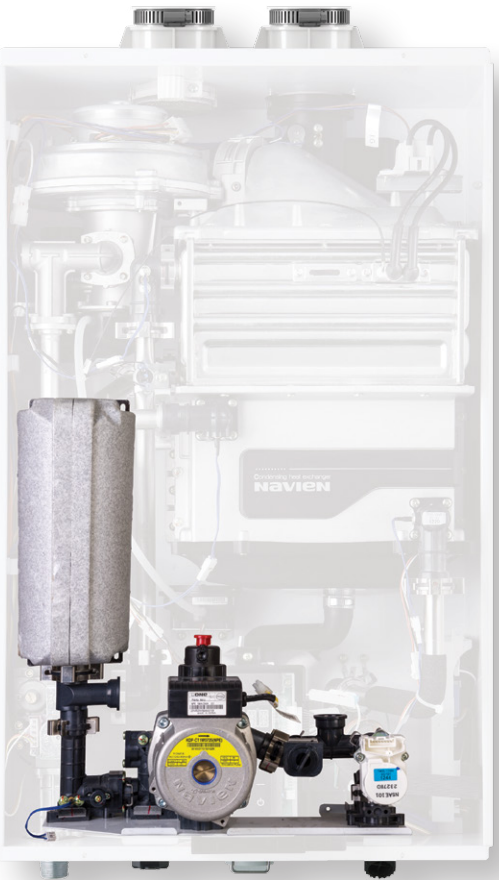


0.96 UEF/0.97 EF advanced high-efficiency tankless water heater technology for residential and commercial applications with exclusive ComfortFlow® recirculation

Included on all NPE-A models

ComfortFlow®
Recirculation system

Navien ComfortFlow® is the first and only system that incorporates a buffer tank and recirculation pump. The buffer tank eliminates the “cold water sandwich” effect commonly found in other tankless water heaters. The recirculation pump saves water and money with the reduced time to get hot water.

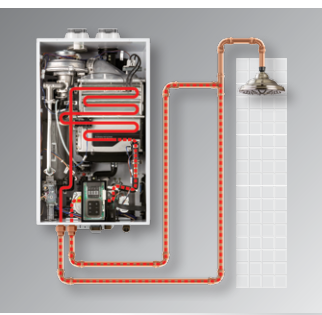


Optional add-ons for NPE-A models

On Demand
Hot water activation system



At the push of a button, the Navien On Demand hot water system activates the internal recirculation pump and gas fired burner to heat up the water in the supply lines. This gives your customers hot water when they need it, saving water and money. California Title 24 compliant.

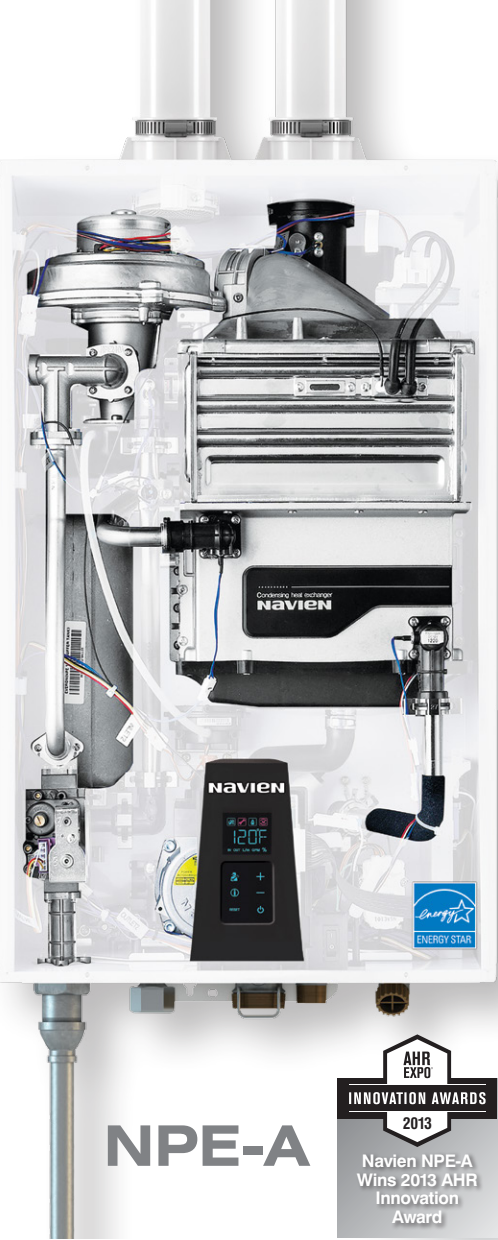


ComfortAir+
Combination space heating and DHW

Designed for both retrofit and new construction residential applications, Navien's ComfortAir+ Kit* consists of an add-on controller that allows for space heating and DHW system integration between NPE-A Series tankless water heater models and a hydronic air handler.

ComfortAir+ is compatible with hydronic air handler models that require W1/W2/R terminals along with single or dual-stage thermostats.** The included Outdoor Reset Sensor provides optimum performance and efficiency for space heating.

*Compatible with NPE-A series units produced on or after May 31, 2014.
**Self-powered thermostats only.



2" PVC VENTING
UP TO 60 FT

1/2" GAS CAPABILITY
UP TO 24 FT

CASCADE UP TO 16 UNITS

DUAL STAINLESS STEEL
HEAT EXCHANGERS

NG OR LP FIELD GAS
CONVERTIBLE

RESIDENTIAL & COMMERCIAL



Heating capacity

Models	Natural gas	Propane gas
NEW NPE-150S	18,000–120,000 BTU/H	18,000–120,000 BTU/H
NPE-180 A/S series	15,000–150,000 BTU/H	15,000–150,000 BTU/H
NPE-210 A/S series	19,900–180,000 BTU/H	19,900–180,000 BTU/H
NPE-240 A/S series	19,900–199,900 BTU/H	19,900–199,900 BTU/H

Operating cost

Navien tankless	161 therms	\$165*
Other tankless	183 therms	\$200*
Standard tank	250 therms	\$272*

*Based on Energy Guide cost estimates using \$1.09 per therm of natural gas.

Temperature rise

Temp rise (°F)	NEW 150S GPM	180 series GPM	210 series GPM	240 series GPM
30	6.8	8.4	10.1	11.1
35	6.8	8.4	10.1	11.1
40	5.9	7.3	8.7	9.7
45	5.2	6.5	7.8	8.6
50	4.7	5.8	7.0	7.8
55	4.3	5.3	6.3	7.1
60	3.9	4.9	5.8	6.5
65	3.6	4.5	5.4	6.0
70	3.4	4.2	5.0	5.5
75	3.1	3.9	4.7	5.2
80	2.9	3.6	4.4	4.8
85	2.8	3.4	4.1	4.6
90	2.6	3.2	3.9	4.3
100	2.4	2.9	3.5	3.9
110	2.1	2.6	3.2	3.5
120	2.0	2.4	2.9	3.2
130	1.8	2.2	2.7	3.0
140	1.7	2.1	2.5	2.8

Warranty

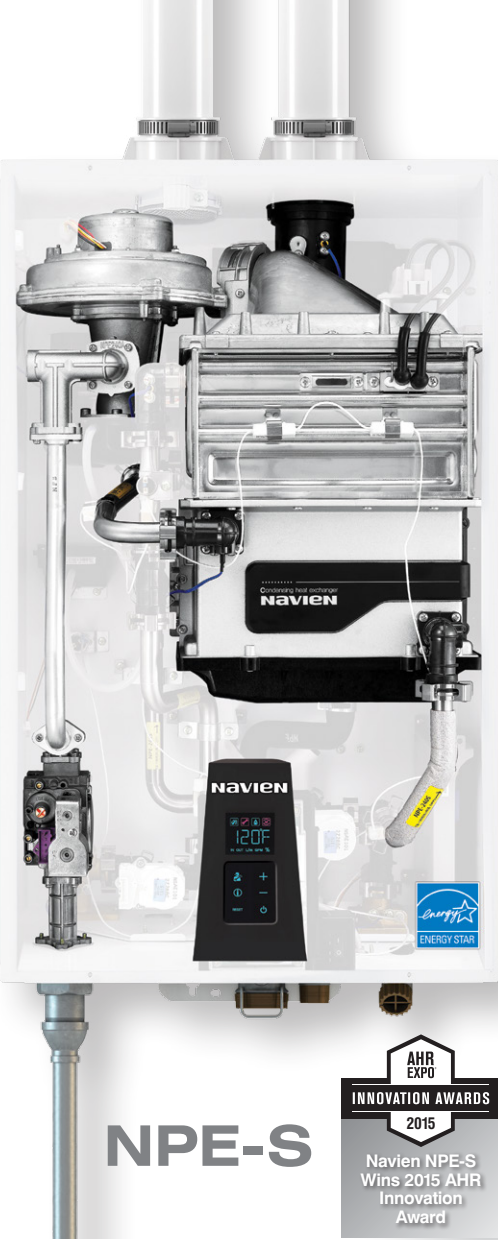
Type	Labor	Parts	Heat exchanger
Residential	1 year	5 years	15 years
Commercial or Combi*	1 year	3 years	8 years

*Combi refers to a combination potable water and space heating application. Water heaters cannot be used in space heating only applications.

U.S. Green Building Council
LEED Points

	Water heater	1
	Location	2
	Recirculation	3

Lower HERS home index score



NPE-Standard



0.97 UEF/0.99 EF ultra condensing tankless technology for residential and commercial applications is the industry's top rated unit for energy efficiency

When it comes to water heater performance, it's all about output

The NPE-S condensing tankless water heaters are so efficient that they outperform much larger capacity non-condensing competitors. More output for the money, lower installation costs and lower operating costs for customers makes it a smart choice.



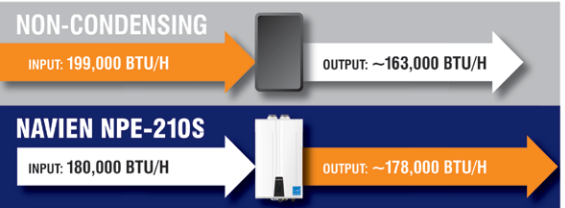
Cascade up to 16 units

With Navien cascading technology, when a unit gets up to 80% capacity the next unit will turn on to help meet requirements. This flow and demand ratio will continue until all 16 units are generating hot water as needed. The Navien cascading system also balances out the workload of each unit for longer life.

Common vent up to 16 units

Building penetrations are reduced with Navien's common venting feature.

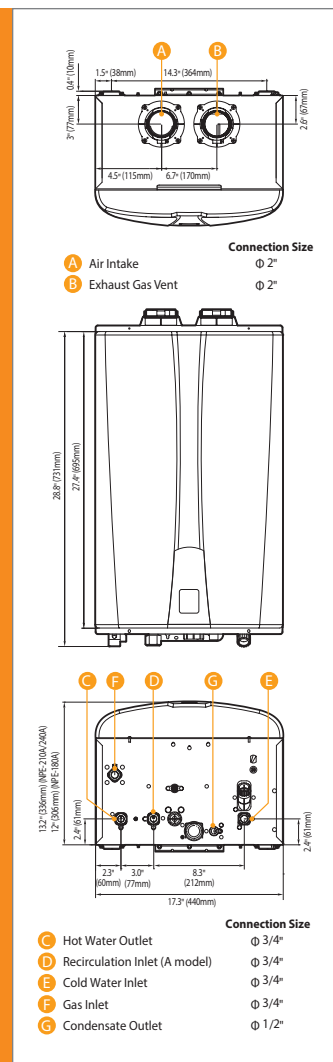
Navien NPE-S condensing tankless water heaters outperform comparably priced non-condensing units



	Standard Non-Condensing Tankless	Navien NPE-210S Condensing Tankless
UNIT SPECS		
Input	199,000 BTU/H	180,000 BTU/H
Energy Factor (EF)	~0.82	0.99
Output	~163,000	~178,000
Max GPM	9.8	10.1
INSTALLATION COST		
List Price	~\$1,800-\$2,800	\$1,640
Installation Time	~4-8 Hours	4 Hours
Venting	Other type (not PVC)	2" PVC
Gas Pipe	Typically 3/4" pipe	Can use existing 1/2" pipe
Overall	Your Choice?	

Note new size
NPE-150S

Dimensions



Specifications

Item		Model						
		NPE-150S	NPE-180A	NPE-180S	NPE-210A	NPE-210S	NPE-240A	NPE-240S
Heat capacity (input)	Natural gas	18,000–120,000 BTU/H	15,000–150,000 BTU/H		19,900–180,000 BTU/H		19,900–199,900 BTU/H	
	Propane gas							
Efficiency ratings	UEF (NG & LP)	0.96	0.96	0.97	0.96	0.97	0.96	0.97
	EF (Canada NG & LP)	0.97	0.97	0.99	0.97	0.99	0.97	0.99
Flow rate (DHW)	35°F (19°C) temp rise	6.8 GPM (26 L/m)	8.4 GPM (32 L/m)		10.1 GPM (38 L/m)		11.2 GPM (42 L/m)	
	45°F (25°C) temp rise	5.3 GPM (20 L/m)	6.5 GPM (25 L/m)		7.8 GPM (30 L/m)		8.7 GPM (33 L/m)	
	67°F (36°C) temp rise	3.2 GPM (12 L/m)	4.3 GPM (16 L/m)	4.2 GPM (16 L/m)	5.0 GPM (19 L/m)	5.2 GPM (20 L/m)	5.6 GPM (21 L/m)	5.7 GPM (22 L/m)
Dimensions		17.3"W x 27.4"H x 13.2"D						
Weight		55lbs (25kg)	75lbs (34kg)	67lbs (30kg)	82lbs (37kg)	75lbs (34kg)	82lbs (37kg)	75lbs (34kg)
Installation type		Indoor or outdoor wall-hung						
Venting type		Forced draft direct vent						
Ignition		Electronic ignition						
Water pressure		15–150 PSI						
Natural gas supply pressure (from source)		3.5"–10.5" WC						
Propane gas supply pressure (from source)		8"–13" WC						
Natural gas manifold pressure (min-max)		-0.04" WC to -0.38" WC	-0.04" WC to -0.84" WC		-0.05" WC to -0.36" WC		-0.05" WC to -0.58" WC	
Propane gas manifold pressure (min-max)		-0.04" WC to -0.42" WC	-0.05" WC to -0.50" WC		-0.10" WC to -0.66" WC		-0.10" WC to -0.78" WC	
Minimum flow rate		0 GPM (0 L/m) for "A" models 0.5 GPM (1.9 L/m) for "S" models						
Connection sizes	Cold water inlet	3/4" NPT						
	Hot water outlet	3/4" NPT						
	Gas inlet	3/4" NPT						
Power supply	Main supply	120V AC, 60 Hz						
	Maximum power consumption	200W (max 2A), 350W (max 4A) with external pump connected						
Materials	Casing	Cold rolled carbon steel						
	Heat exchangers	Primary heat exchangers: stainless steel, secondary heat exchangers: stainless steel						
Venting	Exhaust	2" or 3" PVC, CPVC, polypropylene / 2" or 3" special gas vent type BH (Class II, A/B/C)						
	Intake	2" or 3" PVC, CPVC, polypropylene / 2" or 3" special gas vent type BH (Class II, A/B/C)						
	Vent clearances	0" to combustibles						
Safety devices	Flame rod, APS, ignition operation detector, water temperature high limit switch, exhaust temperature high limit sensor, power surge fuse							

Navien reserves the right to change specifications at any time without prior notice.
 Please refer to www.navien.com to verify you have the most current information.

Accessories

ComfortAir⁺ Kit AHU Optimizer PNBD-000001	On Demand Control Kit PZZZ-00046 Wall Plate GXXX001427 Push Button GXXX001426	PeakFlow™ GXXX001326 Replacement Media GXXX001327	Plumb Easy Valve 3/4" with Relief Valve 30009323A	Plumb Easy Valve 3/4" with Relief Valve Designed to work with pipe cover 30012581A	Vent Cap NPE Series 30010604A	Pipe Cover NPE Series 30012634A Use with Isolation Valves 30012581A
Residential Neutralizer(1 unit) GXXX001322 Replacement Media GXXX001323	Light Commercial Neutralizer (up to 6 units) GXXX001324 Replacement Media GXXX001328	Commercial Neutralizer (up to 16 units) GXXX001325 Replacement Media GXXX001329	Cascade Cable GXXX000546	Remote Controller 30009757A	External Pump Wire GXXX001319	2" and 3" Wall Flange and Vent Terminator Kit 2" – 30010747A 3" – 30003873B



Navien Inc.
 20 Goodyear, Irvine, CA 92618
 800-519-8794, Navien.com

KD NAVIEN®

NPERBR002-1508
 ©2015 Navien Inc.

THE LEADER IN CONDENSING TECHNOLOGY